

Eagle Mt/Brule Lake



SUPERIOR NATIONAL FOREST

NORTH SHORE AREA

TOFTE & GRAND MARAIS, MN

Features

- Highest point in Minnesota
- BWCA Wilderness Permit required
- 3.5 mi. to the summit via Eagle Mt Trail
- 6.7 mi. from Brule Lake Trailhead to the intersection with Eagle Mt. Trail.
- Scenic vistas



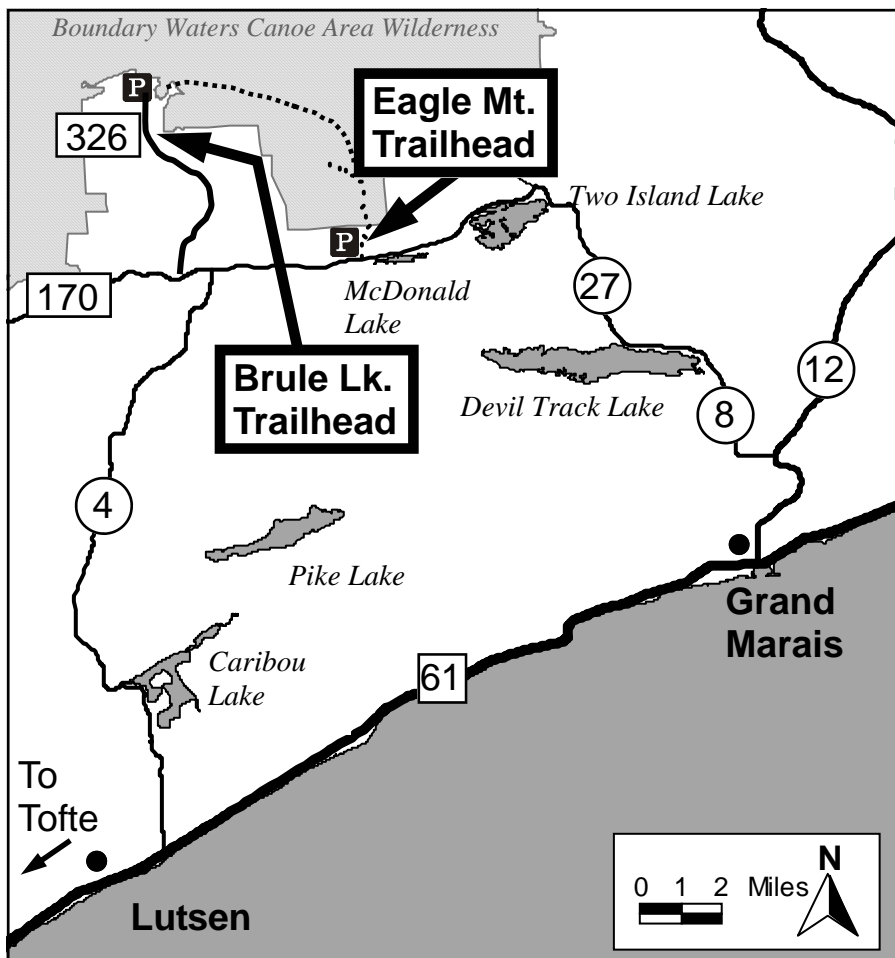
Location

The Eagle Mountain Trail trailhead is located on the north side of FR 170 .

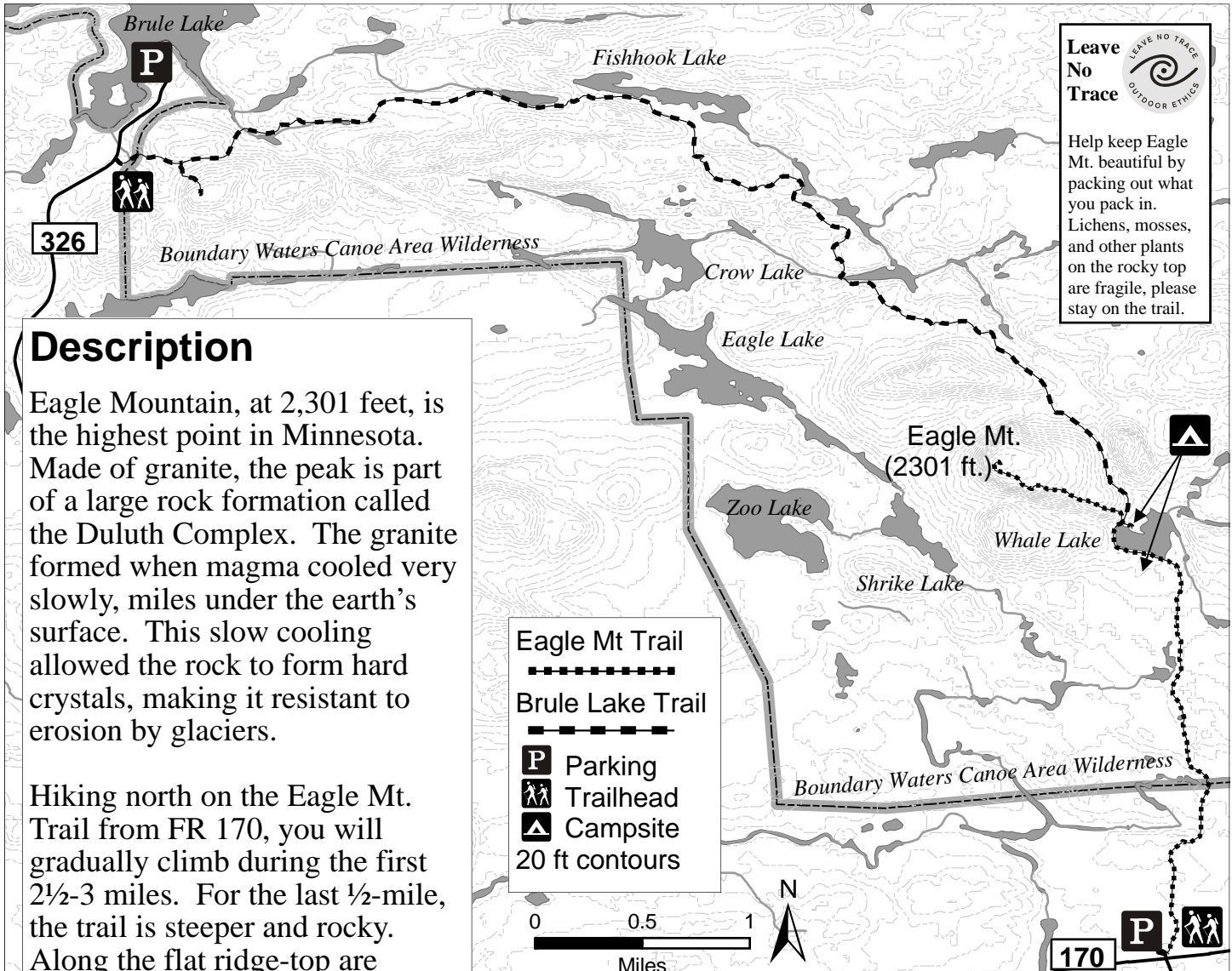
- From MN 61, turn north on County Road 4 (Caribou Trail) just north of Lutsen.
- Follow Co 4 until it ends at FR 170.
- Turn right on FR 170 and proceed 3 1/2 miles to the Eagle Mountain Trailhead parking lot.
- The lot is on the left (north) side of the road.

The Brule Lake Trailhead is on FR 326.

- Turn left off Co 4 onto FR 170.
- Turn right onto FR 326, the Brule Lake Road.
- The trail leaves from the road south of the lot.
- Be sure to visit the permit station and bring a self-issued BWCAW permit with you on your hike.



Superior National Forest - Eagle Mt/Brule Lake



Leave No Trace

Help keep Eagle Mt. beautiful by packing out what you pack in. Lichens, mosses, and other plants on the rocky top are fragile, please stay on the trail.

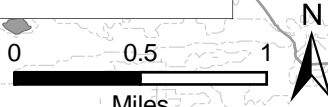
Description

Eagle Mountain, at 2,301 feet, is the highest point in Minnesota. Made of granite, the peak is part of a large rock formation called the Duluth Complex. The granite formed when magma cooled very slowly, miles under the earth's surface. This slow cooling allowed the rock to form hard crystals, making it resistant to erosion by glaciers.

Hiking north on the Eagle Mt. Trail from FR 170, you will gradually climb during the first 2½-3 miles. For the last ½-mile, the trail is steeper and rocky. Along the flat ridge-top are excellent vistas. The highest point is marked by a brass survey disk on the west side of the ridge.

If you hike from the west, starting from Brule Lake Rd (FR 326), you will follow the Brule Lake Trail along a series of lakes with small elevation changes until the trail meets the Eagle Mt. Trail at Whale Lake.

- Eagle Mt Trail
- Brule Lake Trail
- P Parking
- Trailhead
- Campsite
- 20 ft contours



Bring These!

BWCAW permit: Entry Point 78, 79 (Brule L, Eagle Mt Trails)

Day trips and off-season overnight:

Follow directions on the self-issuing permit in the box at the trailhead. Special rules apply, so read the permit carefully (for instance no cans or glass allowed.)

Overnight May - Sept:

Do not use self-issuing permit. Obtain an overnight permit from a Forest Service office or outfitter.

Proper footwear

The trail is rocky and root-covered.

Gunflint Ranger District
2020 W Hwy 61
Grand Marais, MN 55604
218-387-1750

Need more information?

on the web at:
www.fs.fed.us/r9/superior

Tofte Ranger District
PO Box 2159
Tofte, MN 55615
218-663-8060



Printed on Recycled Paper

USDA is an equal opportunity provider and employer

